

# Family Focus

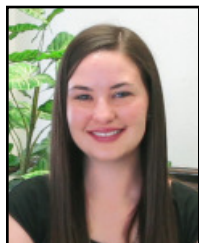
A newsletter from the DDI VANTAGE Early Intervention Program

## October 2011



## Focus on Staff

### Amanda Knighton



Amanda is our new Lead Instructor for the East Site. She has been a substitute Classroom Assistant for DDI VANTAGE for the

past year and a half while she finished school. She recently graduated from the University of Utah with a Bachelors Degree in Human Development and Family Studies.

### Amy Heninger



Amy is a new Speech/Language Pathologist for our West Site. She has worked for the past seven years in

public schools with preschool to 6th grade students and has a Bachelors and a Masters Degree in Speech and Language Pathology.

### Danielle Friberg



Danielle (Dani) is a new Occupational Therapist for our West Site. She has a Masters Degree in Occupational Therapy and

decided to work in early intervention after her internships in early intervention and pediatrics.

## Calendar of Events

### October 2011

#### October 12

Potty Training Workshop  
East Site 5:00 - 6:00 p.m.  
Child care is available, please call at least 24 hours in advance.  
801-266-3939

#### October 13

Infant Massage  
Tooele Site 9:00 - 10:00 a.m.  
Child care is available, please call at least 24 hours in advance.  
435-833-0725

#### October 14

**40th Anniversary Open House**  
**See inside for details**

#### October 15

Building Up Fathers and Families (B.U.F.F.) activity. Please call 801-268-0056 for more details.

#### October 18

Cooking With Kids  
Duchesne County Site  
11:00 a.m. - 12:00 p.m.  
Bring your child to this class.  
435-722-3008

#### October 19

Positive Discipline  
West Site 5:00 - 6:00 p.m.  
Child care is available, please call at least 24 hours in advance.  
801-957-0855

#### October 21

Fall Recess  
DDI VANTAGE closed

### November 2011

#### November 8

Crafts for Kids  
East Site 5:00 - 6:00 p.m.  
Bring your child to this class.  
801-266-3939

#### November 10

Learning Through Play & Music  
Tooele Site 9:00 - 10:00 a.m.  
Bring your child to this class.  
435-833-0725

#### November 11

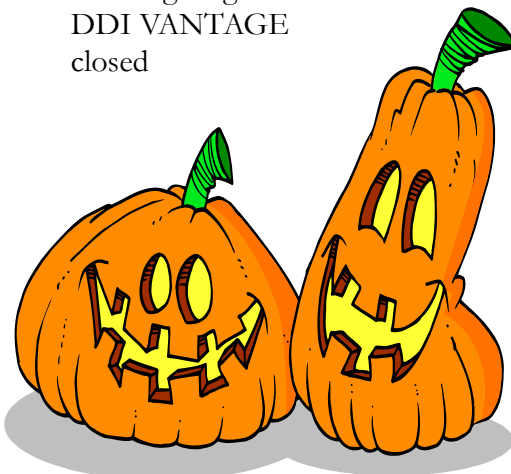
Crafts for Kids  
West Site 12:00 - 1:00 p.m.  
Bring your child to this class.  
801-957-0855

#### November 15

Crafts for Kids  
Duchesne County Site  
11:00 a.m. - 12:00 p.m.  
Bring your child to this class.  
435-722-3008

#### November 24 - 25

Thanksgiving  
DDI VANTAGE  
closed



# Special Announcement

DDI VANTAGE, Inc.  
Cordially Invites You To Our

## 40th Anniversary Open House

Friday, October 14, 2011  
4:30 to 6:00 p.m.

Short presentation at 5:15 p.m.

DDI VANTAGE West Site  
3540 South 5600 West,  
West Valley City

Join us in celebrating the rich history of DDI VANTAGE and the many lives that have been touched through our service in the community.

If you are unable to attend, please share with us how DDI VANTAGE has impacted your life at [www.facebook.com/DDIVANTAGE](http://www.facebook.com/DDIVANTAGE) or send an email to [jkelsey@ddivantage.org](mailto:jkelsey@ddivantage.org).

For more information call  
801-266-3979.



# Focus on Health & Safety

## Trick-or-Treating Safety

Halloween is an exciting time of year for kids, and to help ensure they have a safe holiday, here are some tips from the American Academy of Pediatrics (AAP). For more information, please visit [www.aap.org/advocacy/releases/octhalloween.htm](http://www.aap.org/advocacy/releases/octhalloween.htm).

### All Dressed Up:

- Plan costumes that are bright and reflective.
- Consider adding reflective tape or striping to costumes and Trick-or-Treat bags for greater visibility.
- Because masks can limit or block eyesight, consider non-toxic makeup and decorative hats as safer alternatives.
- Look for and purchase costumes, wigs and accessories with a label clearly indicating they are flame resistant.
- Make sure swords or other props are not sharp or too long.
- Obtain flashlights with fresh batteries for all children and their escorts.
- Teach children how to call 9-1-1 if they have an emergency or become lost.

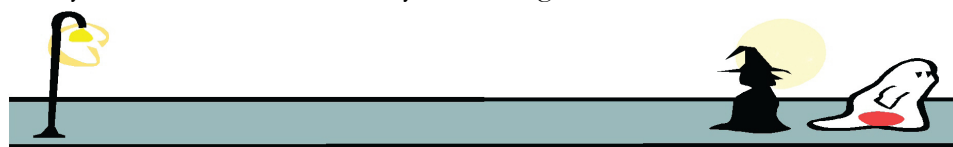


### On the Trick-or-Treat Trail:

- A parent or responsible adult should always accompany young children.
- Only go to homes with a porch light on, never enter homes or cars for treats.
- Remain on well-lit streets and always use the sidewalk.
- If no sidewalk is available, walk at the far edge of the roadway facing traffic.
- Never cut across yards or use alleys.
- Only cross the street as a group in established crosswalks. Never cross between parked cars or out driveways.
- Don't assume the right of way. Motorists may have trouble seeing Trick-or-Treaters. Just because one car stops, doesn't mean others will!
- Notify law enforcement authorities of any suspicious or unlawful activity.

### Healthy Halloween:

- A good meal prior to parties and trick-or-treating will discourage youngsters from filling up on Halloween treats.
- Consider purchasing non-food treats for those who visit your home, such as coloring books or pens and pencils.
- Wait until children are home to sort and check treats. A responsible adult should closely examine all treats and throw away any spoiled, unwrapped or suspicious items.
- Try to ration treats for the days following Halloween.



# Focus on Community

## *Sub For Santa*

Each year DDI VANTAGE conducts a Sub For Santa program for some of the families enrolled in the DDI Vantage Early Intervention Program who are in need. Last year, with the help of some very generous sponsors, many families received assistance.

**Does your family need assistance?** If so, get an application from your service provider, who will help determine if you qualify according to the income guidelines. Make sure to return it to them by Friday, November 4. A random drawing will be held to determine which eligible families will be given assistance based on the number of sponsors we have available. Families will be notified whether or not they will receive assistance.

**Does your family want to help?** The number of families that we will be able to assist will depend on the amount of sponsors we are able to find. We are in need of sponsors to provide assistance for families. Sponsors will receive "Wish Lists" for the family members they will be sponsoring. If you feel being a sponsor is too much for your family we also have a list of items we need as donations.

If you have any questions or would like to sponsor or donate please contact Danielle Mecham at 801-266-3939 or Susan Duncan at 801-957-0855 by Thursday, October 27.

## *Peek Award for Disability in Media*

The SLC Film Society, in collaboration with other non-profits in the disabilities community, is bringing Temple Grandin to Utah November 1-3. Dr. Grandin will be the recipient of the Peek Award for Disability in Media (in honor of "Rainman" Kim Peek, the first recipient of this award). She is scheduled for a series of appearances and events in Salt Lake City and Logan

**Tuesday 11/1 7:00 p.m.** City Library in SLC is showing HBO's "Temple Grandin" and she will conduct a Q & A following the film.

**Wednesday 11/2** Dr. Grandin will be in Logan visiting students at USU in animal husbandry and meeting with folks from the disability community. That evening she'll speak to audience of cattlemen and livestock farmers about best practices for their work.

**Thursday 11/3** During the day, Dr. Grandin will be visiting with children and parents at the Carmen B. Pingree School, conducting a book signing at Art Access/VSW Arts of Utah and meeting with disability and political community leaders. In the early evening, she'll be at OC Tanner for a VIP reception and to receive her award. Later that evening, Dr. Grandin will be speaking at a ticketed event at the Rose Wagner theater. Tickets are \$35.

# Focus on Learning Link

## *Positive Discipline*

DDI VANTAGE has regularly scheduled Positive Discipline classes as part of our Learning Link schedule. The Positive Discipline class will cover information to help you use discipline techniques that can: Set limits that help you and your child, help build your child's self-esteem, help your child develop self-control, encourage desired behaviors, and discourage negative behaviors.

Positive Discipline is effective with children from birth to three because it is different from conventional discipline. It has nothing to do with punishment (which many people think is synonymous with discipline) and everything to do with teaching and guidance.

As you will learn by attending our class, much of what your little one does in these early years has more to do with emotional, physical, cognitive development, and age-appropriate behavior than it does with "misbehavior".

Positive Discipline will be held at our West Site this month on October 19. Watch for additional upcoming classes in the "Calendar of Events" section of each newsletter.



# DDI VANTAGE

DDI VANTAGE, Inc.  
565 East 4500 South, Ste A-220  
Salt Lake City, UT 84107

**Address Service Requested**

Non-Profit Org.  
U.S. Postage  
Paid  
SLC, UT  
Permit No. 6770

Place Label Here

We happily accept your voluntary donations. We also appreciate in-kind donations such as **new** baby items, diapers, and toys. Thank you to all of those who have donated to our agency. We appreciate you!

Please accept my donation of \$\_\_\_\_\_ for the DDI VANTAGE Early Intervention Program.

Date:\_\_\_\_\_ Name:\_\_\_\_\_ Name of child enrolled:\_\_\_\_\_

Address:\_\_\_\_\_ Phone:\_\_\_\_\_

**\*\*Your generous donation will be directly available to benefit the children and families who are served in the DDI VANTAGE Early Intervention Program.**

**Editor: Charlene Todd • E-mail: [ctodd@ddivantage.org](mailto:ctodd@ddivantage.org) • Phone: (801) 266-3979 • Web site: [www.ddivantage.org](http://www.ddivantage.org)**  
DDI VANTAGE is an equal opportunity employer and does not discriminate against its employees nor its clients on the basis of race, religion, gender, age, national origin, political affiliation, or disability.

## *DDI VANTAGE Early Intervention Locations*

East:	West:	Tooele County:	Duchesne County:
3950 S. 700 E. Ste 101	3540 S. 5600 W.	165 S. Main Ste 200	187 W. Lagoon St.
Salt Lake City, UT 84107	West Valley City, UT 84120	Tooele, UT 84074	Roosevelt, UT 84066
(801) 266-3939	(801) 957-0855	(435) 833-0725	(435) 722-3008